



High Street

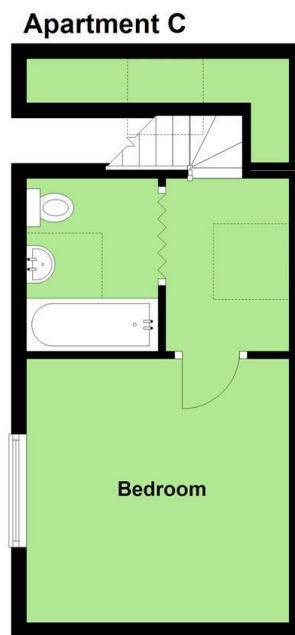
London Colney, AL2 1HP

£1,200 PCM

- Available March 2025
 - One Bedroom
 - High Street Location
- Open Plan Lounge/Kitchen
- Modern Fully Fitted Kitchen
- High Specification Throughout
 - Duplex Apartment
 - Communal Gardens
 - Private Parking
 - Council Tax Band B



JW&Co St Albans
 3 London Road, St Albans, Hertfordshire, AL1 1LA
 01727 844444
stalbens@jwandco.co.uk



OPEN PLAN KITCHEN/LIVING ROOM:

3.78m x 3.59m (12'4" x 11'9")

KITCHEN:

3.60m x 2.00m (11'9" x 6'6")

STAIRS TO FIRST FLOOR LANDING:

BATHROOM:

BEDROOM:

3.48m x 3.23m (11'5" x 10'7")



Although these particulars are thought to be materially correct their accuracy cannot be guaranteed and they do not form part of any contract.

Energy Efficiency Rating		Current	Potential
Very energy efficient - lower running costs			
(92 plus) A			
(81-91) B			
(69-80) C		78	78
(55-68) D			
(39-54) E			
(21-38) F			
(1-20) G			
Not energy efficient - higher running costs			
England & Wales		EU Directive 2002/91/EC	

Environmental Impact (CO ₂) Rating		Current	Potential
Very environmentally friendly - lower CO ₂ emissions			
(92 plus) A			
(81-91) B			
(69-80) C			
(55-68) D			
(39-54) E			
(21-38) F			
(1-20) G			
Not environmentally friendly - higher CO ₂ emissions			
England & Wales		EU Directive 2002/91/EC	